



Endpoint "*Baby Ambre*"

User manual



Introduction

At Metrum Acoustics we are fanatic about building the best Digital to Analogue converters because of our love for making digital music sound sublime!

Because of this dedication to perfection we can truly appreciate listening experiences like ROON®.

Roon® looks at your music and finds photos, bios, reviews, lyrics, and concert dates, and makes connections between artists, composers, performers, conductors, and producers.

What you get is a **searchable, surfable magazine** about your music.

And as we believe a DAC, Digital to Analogue converter is the heart of your music setup, what else can we do than to build a ROON end point which will allow you to direct your digital music through our device in order to get the most sublime sound available!



IMPORTANT SAFETY INSTRUCTIONS

- 1.** Read Instructions.
- 2.** Keep these Instructions.
- 3.** Heed all Warnings.
- 4.** Follow all Instructions.
- 5.** Do not use this apparatus near water.
- 6.** Clean only with a dry cloth.
- 7.** Do not install near any heat sources such as radiators, heat registers, stoves, or other apparatus (including amplifiers) that produce heat.
- 8.** Unplug this apparatus during lightning storms or when unused for long periods of time.
- 9.** Refer all servicing to qualified service personnel. Servicing is required when the apparatus has been damaged in any way, such as a power-supply cord or plug is damaged, liquid has been spilled or objects have fallen into the apparatus, the apparatus has been exposed to rain or moisture, does not operate normally, or has been dropped.
- 10.** The Ambre must be placed on a firm, level surface where it is not exposed to dripping or splashing.
- 11.** Before making connections to the dac, ensure that the power is off and other components are in mute or stand-by mode. Make sure all cable terminations are of the highest quality, free from frayed ends, short circuits, or cold solder joints.
- 12.** THERE ARE NO USER SERVICEABLE PARTS INSIDE THE "Ambre".
Please contact All Engineering if you have any questions not addressed in this guide.
- 13.** All Engineering cannot be held accountable and/or responsible for any form of damage or health issues inflicted to you, other people, pets, companies and non-living objects, that are caused by any form of usage of the product which is not described in this manual.
- 14.** By actually using this product and turning it on for the first time, you agree to these terms



What is in the Box

- The Baby Ambre Endpoint
- Power cord (only Euro or USA based power cords)
- 1x UTP cable 1.5 mtr

Connections



Caution! Please connect your interconnects first before connecting the mains power cable!

- **Power requirements:** De product is made to handle mains voltages between 90 and 260 Volts.
- **LAN (local area network) input:** Connect an UTP cable with your local network. The Baby Ambre is made as a Roon end point and cannot work as a standalone device. The Ambre expects a working Roon music server on the same local network.
- **Coaxial Output:** A 75 Ohm coaxial cable should be used to connect the Ambre to other digital audio equipment like a dac for instance. The coaxial output has a galvanic isolation and can handle a maximum sample rate of 192 kHz.
- **Optical output:** A standard Toslink cable can be used to connect the Ambre to other digital audio equipment. The max sampling rate of the Toslink interface is limited to 96kHz.

Operation



- **Starting up procedure:** By default the Baby Ambre will startup as soon the mains cable is connected. During the first period the Baby Ambre will show you a flashing blue light for max. two minutes. During this period the Baby Ambre is starting up all routines to connect to the Roon music server.

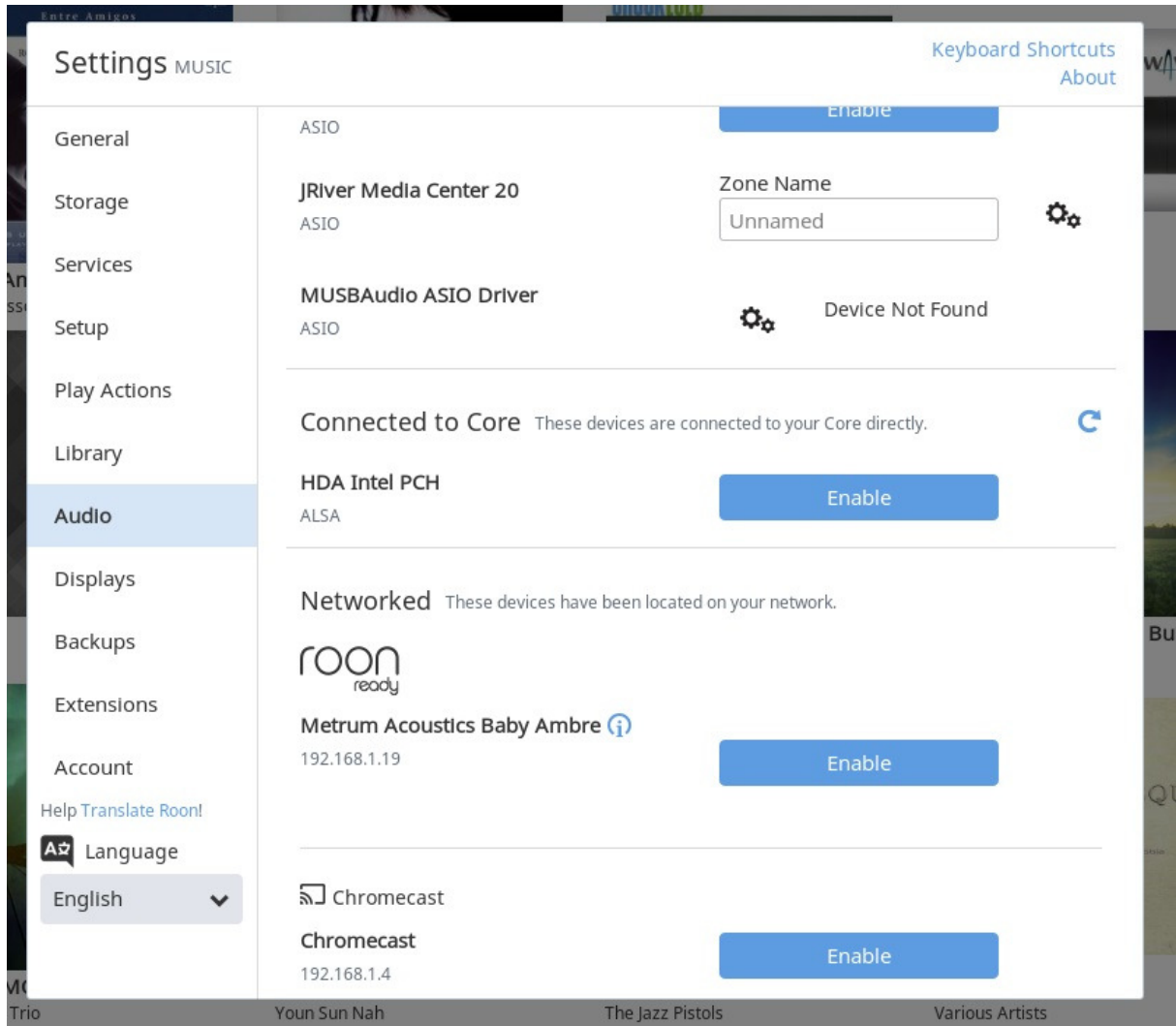
Caution! When the Baby Ambre is starting up for the very first time it will look for any kind of update when available. During this period the led is still flashing and can take more time (max 10 minutes) than usual. Please never remove the power from the unit as long the Baby Ambre is in this state as it can damage the data on the internal sd card.

METRUM ACOUSTICS

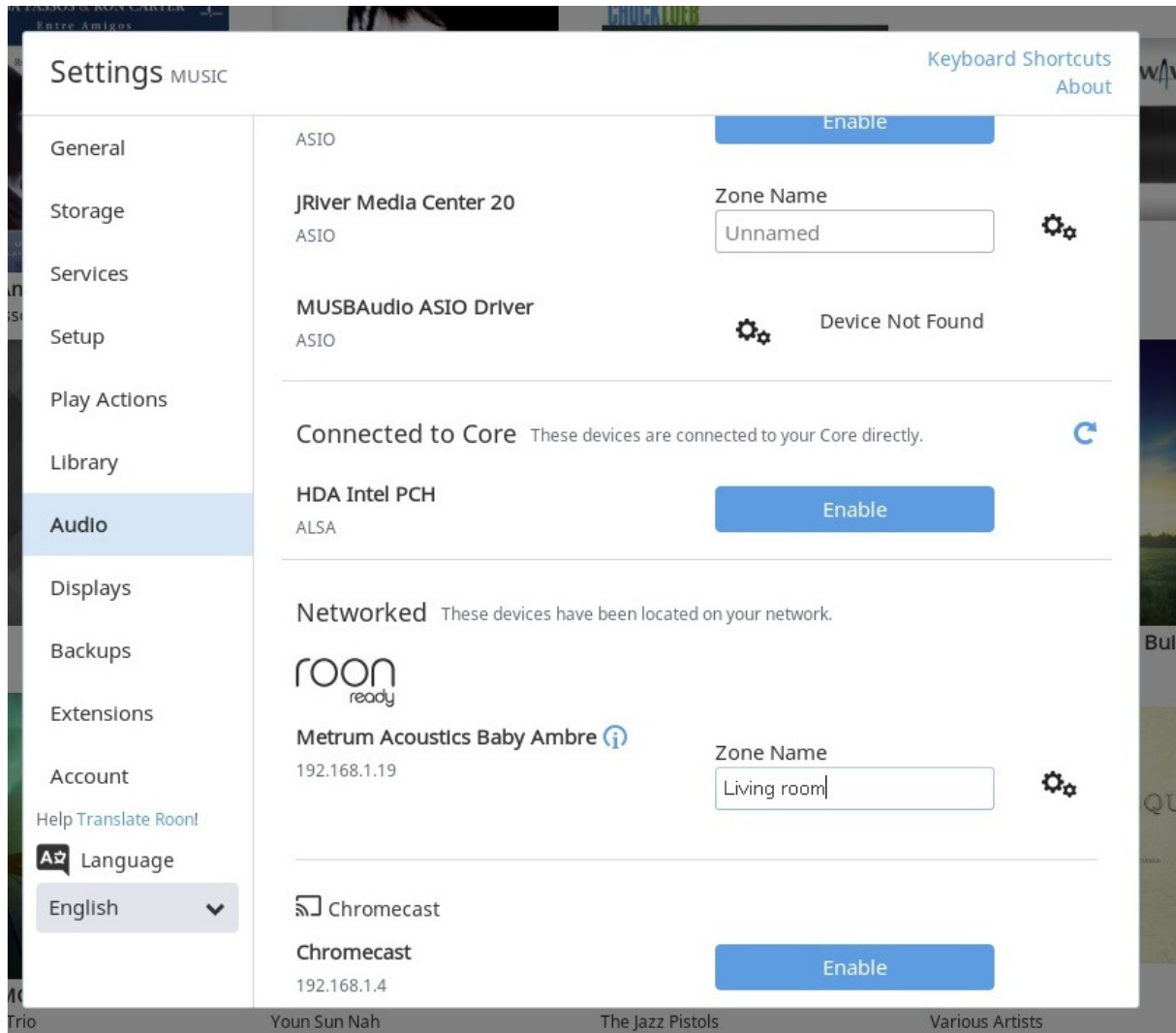


How to make the Ambre visible in Roon

- When the Baby Ambre is connected and full operational (no blinking blue light) your Roon user interface will detect the presence of the Ambre.
- Go to settings > audio. The next screen is visible:

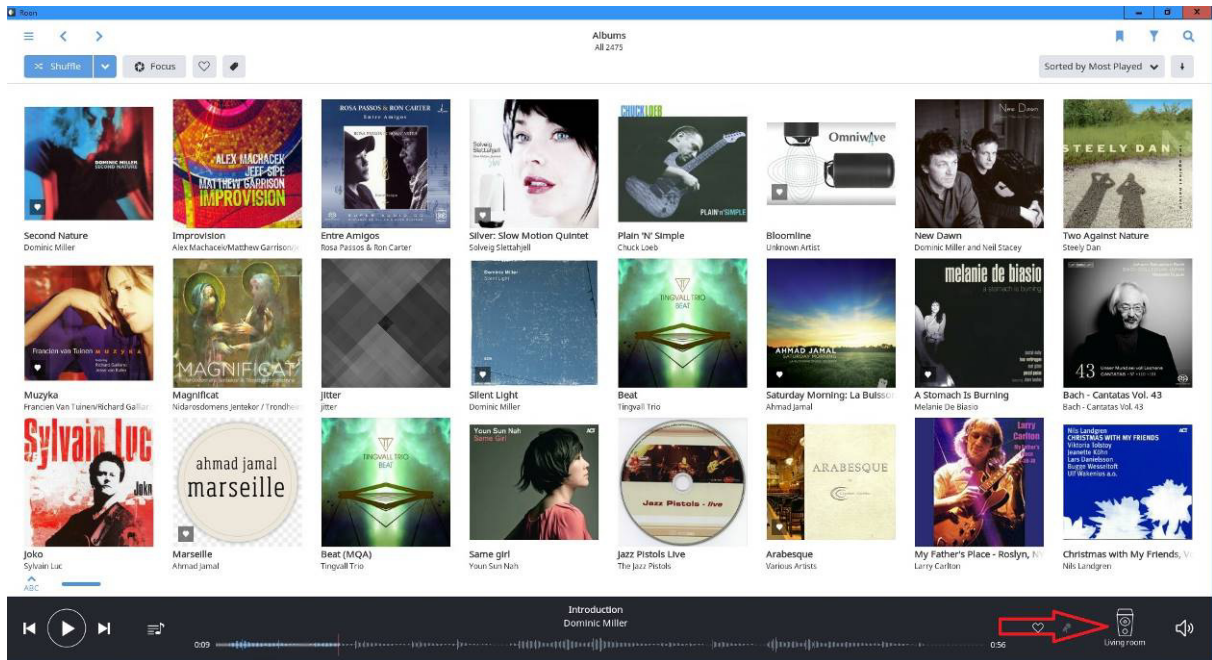


- Now the Baby Ambre is visible but should be enabled before it can be used.



- Enable the Baby Ambre for your network and give it a name for the area in use (for instance living room , kitchen or bedroom) Now the Baby Ambre is ready for use.

METRUM ACOUSTICS



- The last step is to select the right output device for the specific room. Go to the right bottom in your Roon user interface and select the right source by clicking on the Icon.



Technical specs :

| | |
|---------------------|--|
| Working principle: | Linux based Roon end point |
| Power supply: | 5 VA |
| Power consumption: | Full operation 3.5 Watts |
| Power requirement: | 90 -260 V AC |
| Inputs: | Lan (local area network) max. 100 Mbps |
| Outputs: | 1x optical Toslink, 1x RCA coax, |
| Sampling frequency: | Optical : 44.1 - 96 kHz sampling. Coaxial: 44.1 - 192 kHz sampling. |
| Dimensions hwxwd: | 4 x 12 x 12 cm |
| Weight: | 420 gram. |

Subject to change without notice.

Email: info@metrumacoustics.com
Website: <http://www.metrumacoustics.com>