

Pavane upgrade to DAC3 – Check your Pavane Level first

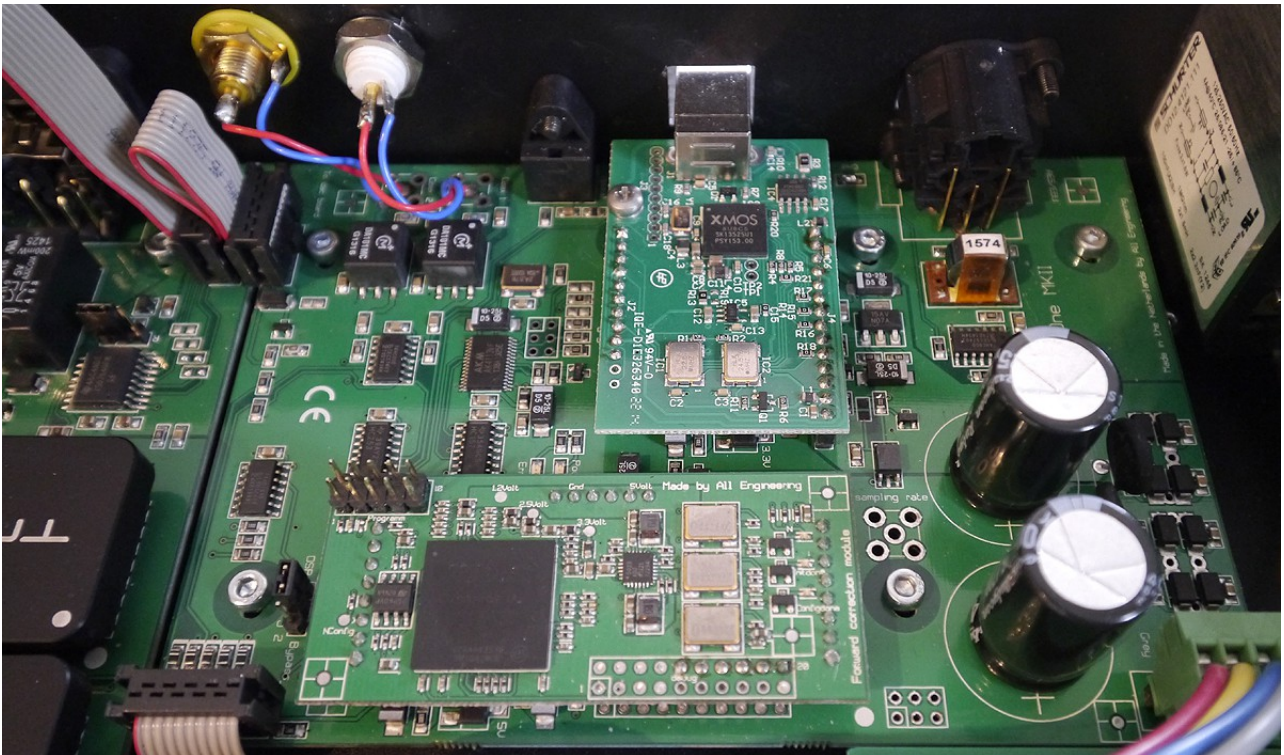
To upgrade to DAC3, a Pavane needs to be Level 2 or Level 3. We will discuss how to identify the Level of your Pavane below. First, the Level 2 and Level 3 Pavane and how to identify it will be discussed, then the Level 1 Pavane is discussed.

Identifying Pavane Level 2 and Level 3



The forward correction module (see picture and explainer below) is not placed. DAC modules are DAC2 or DAC3 (check underside of DAC modules). Older Pavane models have Lundahl transformers on the DAC boards, where in later models an operational amplifier is used to go from Balanced XLR to Unbalanced (single ended) Cinch output. The Balanced XLR outputs of the Pavane are directly connected to the DAC modules. You can use both the XLR and Cinch outputs at the same time without degradation of sound quality.

For extra clarity, the forward correction module is displayed below, in the lower middle. The text “Forward correction module” can be found on the right side of the module.



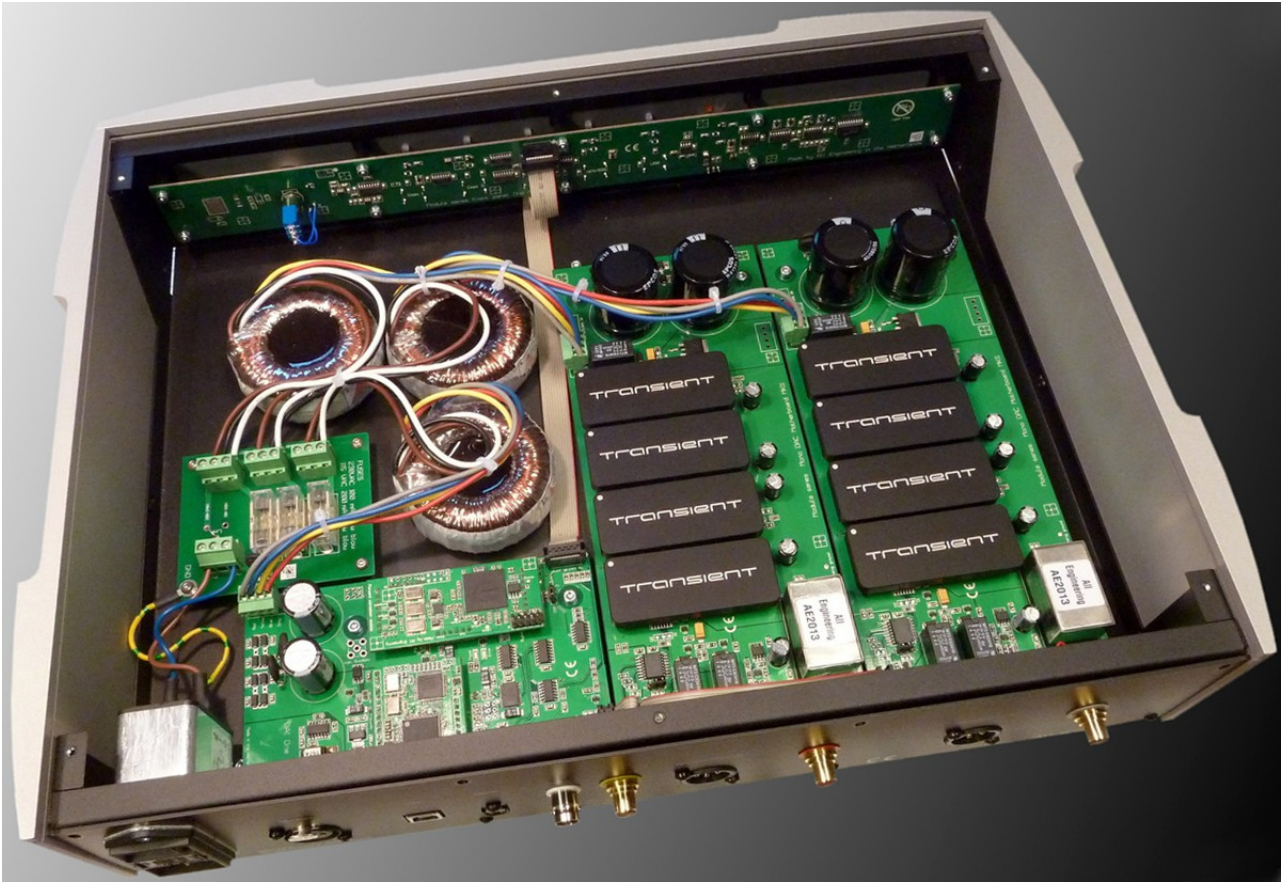
Good to know:

DACone and DAC2 have the Transient logo. Therefore, you have to check the underside of the DAC module to identify it. DAC3 always has the Metrum Acoustics logo on top.

A Level 2 Pavane looks exactly the same as a Level 3 Pavane. The difference is in the maximum sample rate the DAC modules accept. A Pavane Level 2 has DAC2 modules that accept sample rates up to 192kHz. A Level 3 Pavane with DAC2 modules accepts sample rates up to 384kHz. With DAC3, this distinction is not made, all DAC3 modules work up to 384kHz.

Identifying Pavane Level 1

A Level 1 Pavane is shown below:



The digital input board (lower left) shows the difference; it has the forward correction module on it. Also, the DAC modules are DACone (check underside of module).

A Level 1 Pavane can be shipped back to our factory for modification to accept DAC3. The modification is not a DIY process and is three-fold:

- The DAC boards need to be modified so the data enters the DAC module correctly
- The forward correction module needs to be removed and jumpers placed
- If you want to place an MQA module at a later time, the Digital input board needs to be replaced

If you have a Level 1 Pavane and require the modification please send an email to info@metrumacoustics.com about your intention to modify your Level 1 Pavane and fill in an RMA form. Please indicate if you would like us to change the Digital Input board. We will logistically treat the modification as a repair, which can also help prevent import taxes (see explanation on repair page: <https://metrumacoustics.com/content/16-repairs>). Our RMA form can also be downloaded there. Fill in and print the first page and put it in the box, so the original owner can always be traced. Package your Pavane well to prevent transport damage. Ship your Pavane using insurance to cover for transport damage.